



Lounge

CartrefNumber64 is a light and spacious 4 bedroom bungalow, ideal for large families or for two families holidaying together.

The large lounge provides sofa seating for 8 people to sit together, as does the table in the dining room. The 'mini-lounge' at the end of the dining room with sofas and 50 inch TV offers a nice area separate to the lounge where guests can be apart for a while when this suits.

CartrefNumber64 is located within a 10 minute walk of the fabulous beach at Benllech. In addition to the yellow sandy beach Benllech also boasts numerous bars, restaurants, pubs, cafes, convenience stores, and two ice cream shops.

Beyond the front door is an entrance hallway. The two doors to the right of the entrance lead to two king bedrooms (1 & 2).

Ahead and to the right of the entrance, is the main bathroom for the house, containing a walk-in shower, sink pedestal and WC.

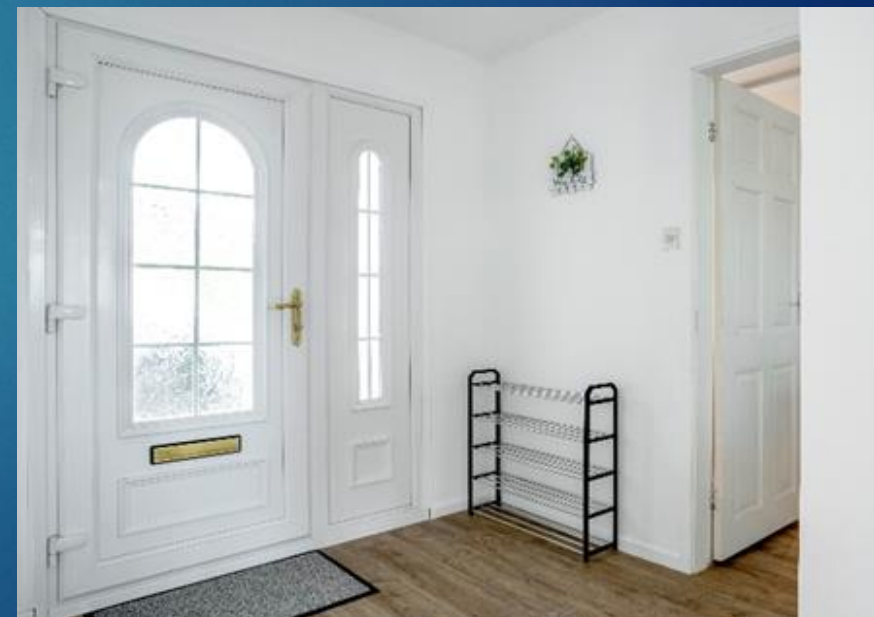
The door to the left of the entrance hall leads to a lounge equipped with seating for 8 people. To the far end of the lounge, past the bookcase is a twin bedroom (3).



Dining Room



Bathroom



Entrance





Bedroom 1

The other exit from the lounge leads to the well-equipped kitchen

The kitchen overlooks the spacious dining room with two sets of bi-fold doors leading to the patio and back garden.

A corridor leads from the dining to the utility room and another twin bedroom (4) with an ensuite bathroom.

Bedroom 1 contains a king size bed, a wardrobe and two bedside tables. The window looks out on the driveway at the front of the house.



Bedroom 2

Bedroom 2 contains a king size bed, a wardrobe and two bedside tables. The window looks out on to the garden. You can glimpse the sea from this room and part of the Snowdonia mountain range in the distance.



Bedroom 3

Bedroom 3 contains two single beds, a wardrobe, two bedside cabinets and a desk with office chair. The window looks out on to the driveway at the front of the house.

Bedroom 4 contains two single beds, a wardrobe, and two bedside cabinets. The ensuite bathroom is equipped with an electric shower, pedestal sink and WC.



Bedroom 4





Kitchen

The lounge contains two 3-seater sofas, a 2-seater sofa, a log burner, and a 50-inch TV. Two bookcases with an array of books and board games provide additional entertainment opportunities.

The dining room is equipped with a dining table and 8 chairs, two 2-seater sofas, and a 50-inch TV. Two bi-fold doors open out on to the patios and the large back garden.

The well-equipped kitchen contains a double oven, induction hob, microwave, dishwasher, american-style fridge freezer, slow cooker, air fryer, food processor, toaster, cafetiere and kettle.

The utility room contains a sink, washing machine, and under counter fridge.

To the front of the property there is off-road parking for 4 cars.

To the rear of the property is a large enclosed garden with a patio area and garden dining furniture to seat 8 people.

All utilities, linen and bath towels provided. Please note you will need to bring beach towels. No smoking.



Utility Room



Front of house



Rear of house